



# Finding Scotland's Forgotten Generation MATPACT

## Medication Assisted Treatment Pilot at Custody Toolkit

Authors: M Gillies, P Rusk, B Fraser

### Background

- Scotland has the highest rate of drug related deaths in Europe.
- 19% of drug related deaths have been in custody in the 6 months prior to their death.
- Police Custody Healthcare Team identified 52% of patients at risk of drug related death were not referred to health.
- The referral system provided an inequity of care.
- This prompted the team to create an innovative approach to proactively identify those at risk and offer health intervention.

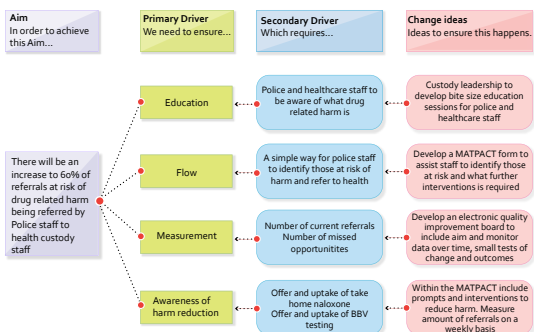
### Aims and Objectives

- Increase number of take home Naloxone offered and accepted in Police Custody by 80% in 10 weeks.
- Increase number of BBV tests offered in police custody by 50% in 10 weeks.
- Increase number of referrals to health from police.
- Create and implement a toolkit to ensure equitable healthcare and harm reduction intervention in police custody.

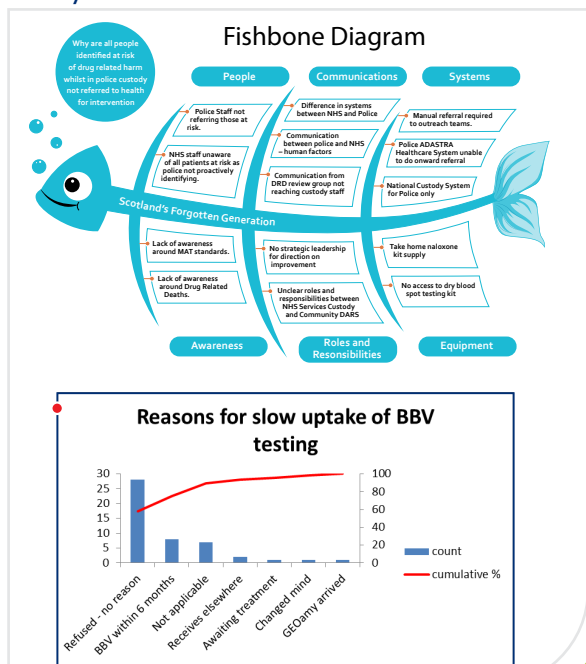
### Methodology

- The team used quality improvement methodology to identify the quality issue, understand the problem and develop a theory of change.
- The model for improvement was used as their approach identifying aims, measurement and tests of change.

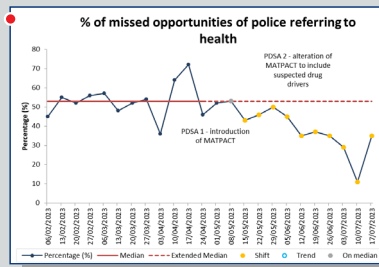
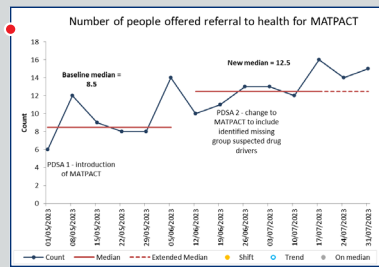
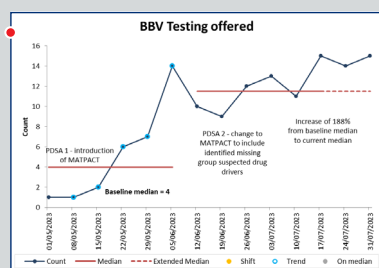
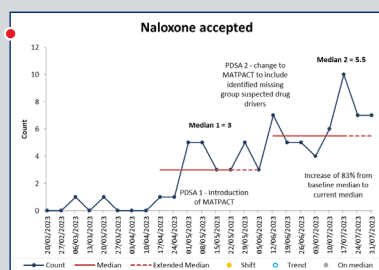
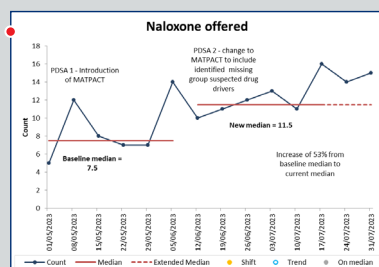
#### Measures included number of referrals for MATPACT



### Analysis



### Results



### Conclusions and Lessons Learned

- 12% increase in patients referred to custody healthcare.
- Take home naloxone uptake increased by 1775%.
- BBV testing increased by 1600%.
- Increased referral to outreach and core services.
- MATPACT potential for use within Scotland. Projected expansion within prison establishments.
- MATPACT has shown a quick improvement result contributing to positive patient and staff experience through low effort, high impact tests of change.
- Outcome measures will include drug related deaths however this data is published annually.
- Other outcome measures will be submitted by Police regarding readmissions to custody within 28 days.
- Outcome measures achieved through increased referrals to healthcare team by a reduction in missed opportunities from police referrals.